

JEWISH HOME
SAN FRANCISCO, CALIFORNIA

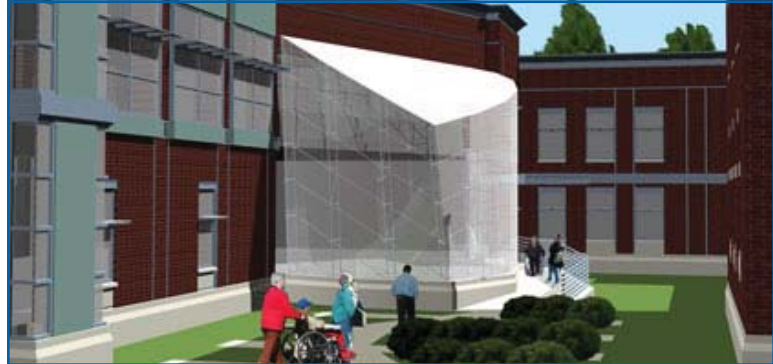
■ Mechanical

1st Place, Best Retirement Home, "Best on the Jewish Bay Area 2005" by the Jewish news weekly of Northern California

Licensed Skilled Nursery Facility

OSHPD Compliance

New Boiler Plant for the Entire Facility



Guttman and Blaevoet provided services to the Jewish Home on various projects over the last 20 years. The Jewish Home is a four-building, eight-acre licensed skilled nursing facility that provides residential and healthcare services to over 400 residents. The most recent East Wing project consists of phased construction of a 45,000 square foot addition and renovation of 15,000 square feet. The new East Wing project includes:

- Two new kitchens, kosher and non-kosher, serving 1,700 meals per day
- State-of-the-art medical clinics and laboratory services
- Geriatric research center
- Synagogue and spiritual space
- Adult day program spaces; wellness and fitness centers
- Coffee bistro and gift shop
- Receiving facility and offices
- New boiler plant serving the entire facility

The new building meets code requirements for a licensed skilled nursing facility (SNF) under the oversight of the California Office of Statewide Health Planning and Development (OSHPD). Our work includes design of a new boiler plant to serve the entire facility including the new addition.

OWNER

Jewish Home
San Francisco, California

SCOPE

45,000 SF Addition
15,000 SF Renovation
New Boiler Plant

SERVICES

HVAC, Plumbing, Fire Protection
OSHPD Coordination

COST

\$27 million

COMPLETED

2007

