

VALLEY SPECIALTY CENTER

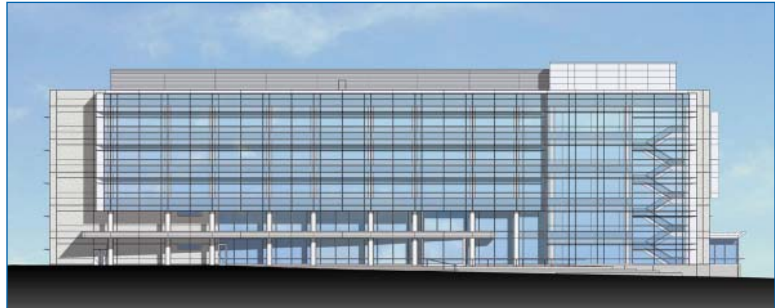
SAN JOSE, CALIFORNIA

Exceeds 2001 California Energy Code by 18%

PG&E Savings By Design For Healthcare owner incentive of \$150,000—the maximum allowable under this program



■ Energy/Modeling ■ Commissioning ■ Mechanical



This new 244,000 square-foot multi-specialty care center includes outpatient clinics, special procedure areas, diagnostic services, and physician's offices. The building's program features four Centers of Excellence: a Cancer Center, Cardiovascular Center, Diabetes Center, and Neurosciences Center. Located on a prominent city corner, the L-shaped building will serve as a symbolic gateway to the campus. The building is organized using a modular planning approach that allows for flexibility and adaptability over time, with public circulation and patient waiting spaces located along the perimeter. This licensed facility has been designed to meet OSHPD-3 requirements. Our mechanical design includes energy-efficient variable-flow chilled water and heating hot water systems, premium efficiency motors, and low-velocity ducts. We are also participating in a full commissioning program.

Energy Analysis & Savings. Our energy analysis assisted in the selection of energy-efficient building design featuring low-e insulated glass, occupancy sensors, daylight harvesting and control, strategic exterior shading, and optimized envelope. Our energy analysis also resulted in a building that is 18% superior to California's 2001 energy code and received a PG&E Savings By Design for Healthcare owner incentive of \$150,000—the maximum allowable under this program.

OWNER

County of Santa Clara & Santa Clara Valley Health & Hospital System

SCOPE

244,000 SF, 5 Floors

\$91 Million

SERVICES

Energy Analysis

HVAC

Plumbing & Fire Protection

Medical Gases

Commissioning

COMPLETED

Bid 2005

Estimated Construction 2008

